

How to create a topology offline with HiProvision

This lesson describes step by step how to create a topology offline in HiProvision.

Prerequisites:

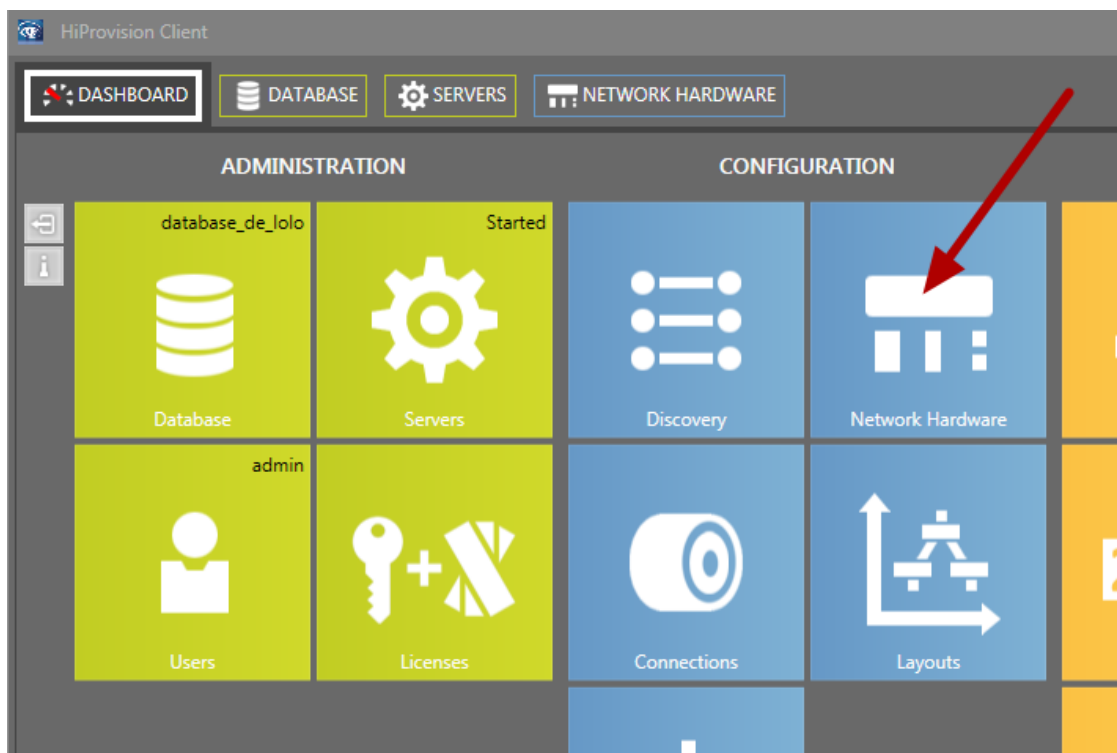
HiProvision must be installed and the server started.

(refer to the lesson how to create a database with HiProvision if necessary)

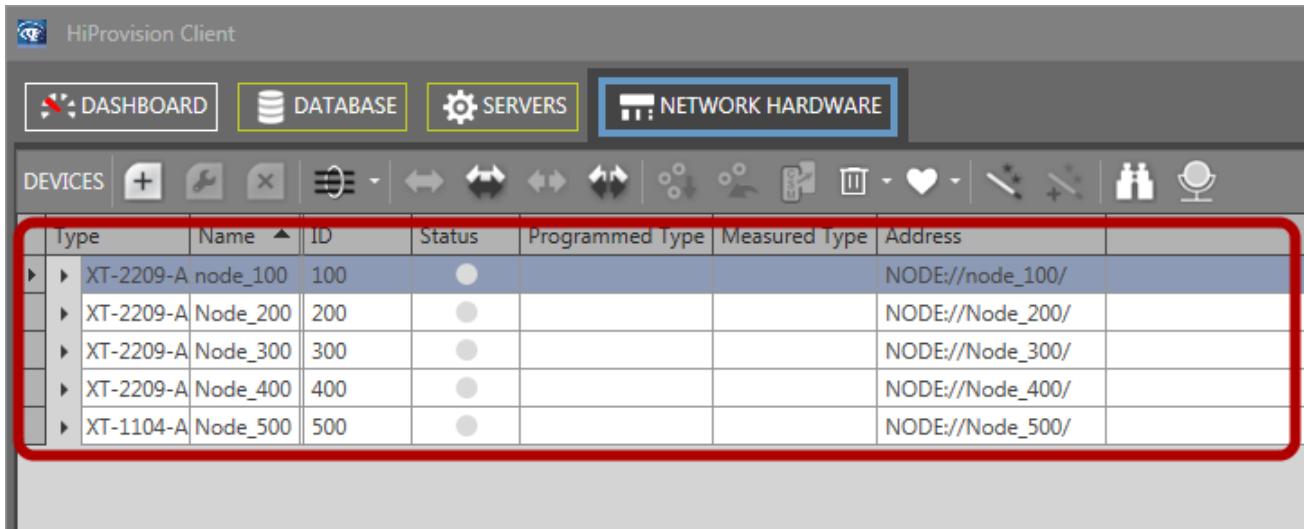
The database must contain devices

(refer to the lesson of to create devices offline in HiProvision if necessary)

From the Dashboard, Start the "Network Hardware" App



You must have several devices in the Device list



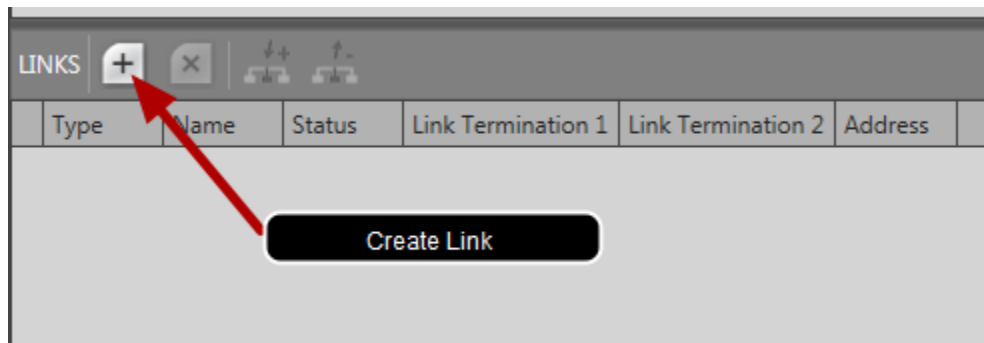
The screenshot shows the HiProvision Client interface with the 'NETWORK HARDWARE' tab selected. A table of devices is displayed, with a red box highlighting the table content.

Type	Name	ID	Status	Programmed Type	Measured Type	Address
XT-2209-A	node_100	100	●			NODE://node_100/
XT-2209-A	Node_200	200	●			NODE://Node_200/
XT-2209-A	Node_300	300	●			NODE://Node_300/
XT-2209-A	Node_400	400	●			NODE://Node_400/
XT-1104-A	Node_500	500	●			NODE://Node_500/

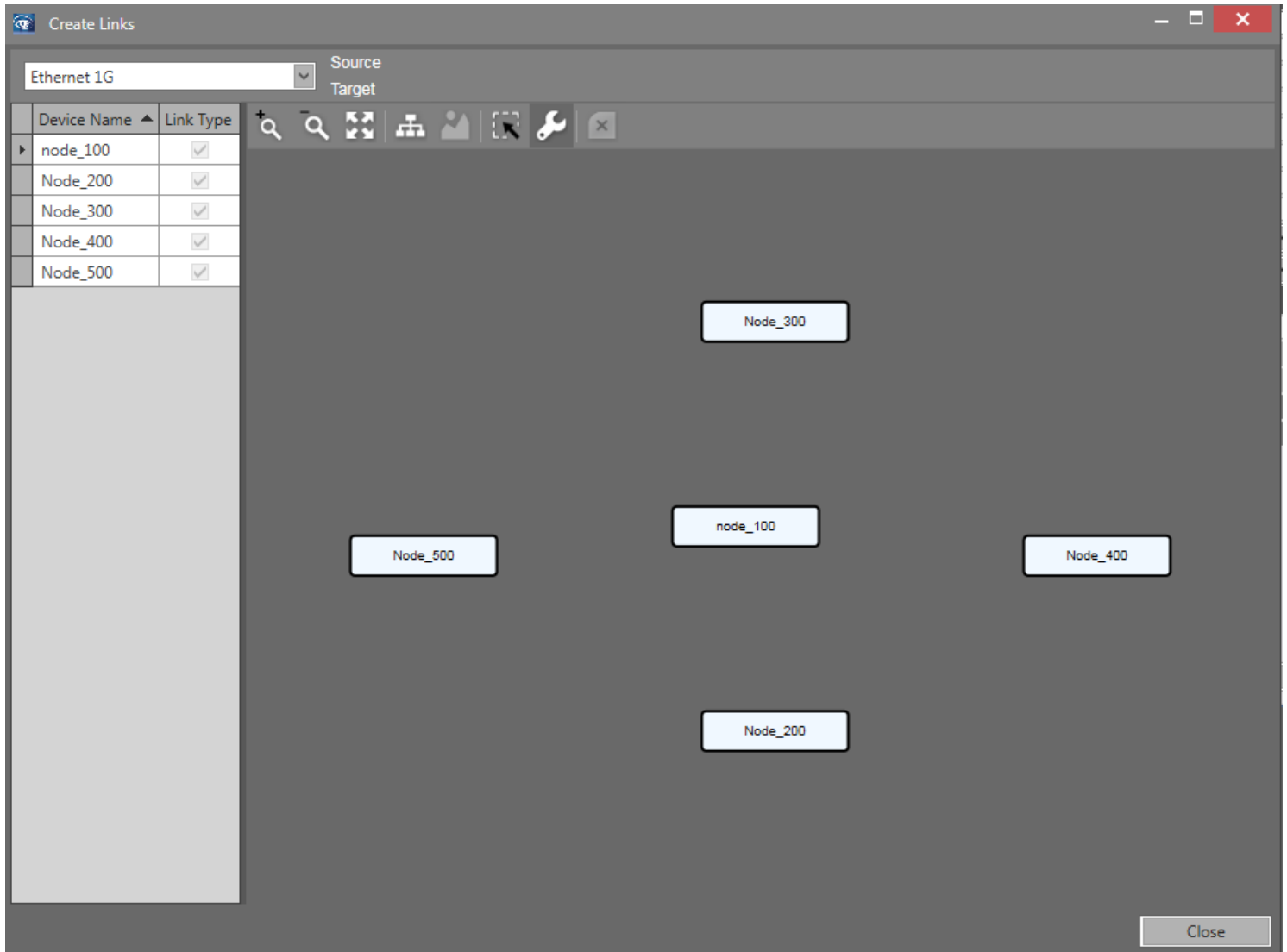
Your devices must have ports configured as WAN interfaces (per default all the Ethernet ports are configured as WAN interfaces so if you just created the devices the interfaces are already configured as WAN interfaces).

Otherwise you can refer to the lesson "How to configure interfaces as LAN or WAN in Hiprovision"

In the Link menu, Select "create link"



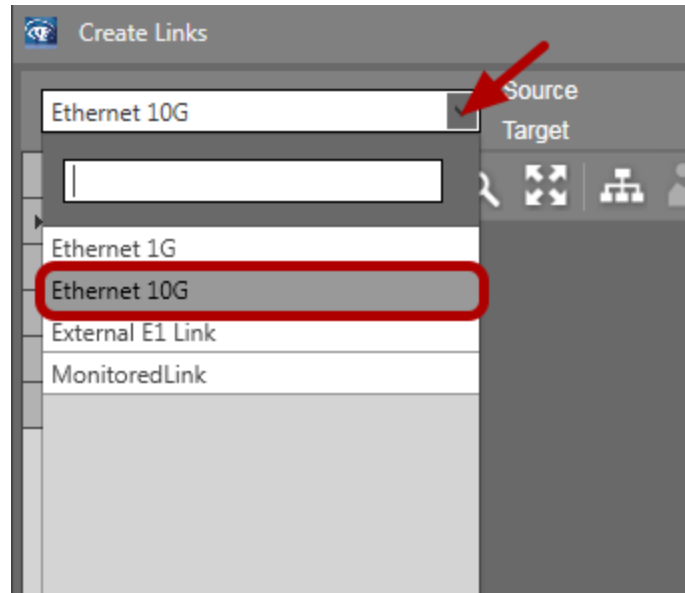
A create Links dialog opens



Layout of your network is displayed with all your devices.

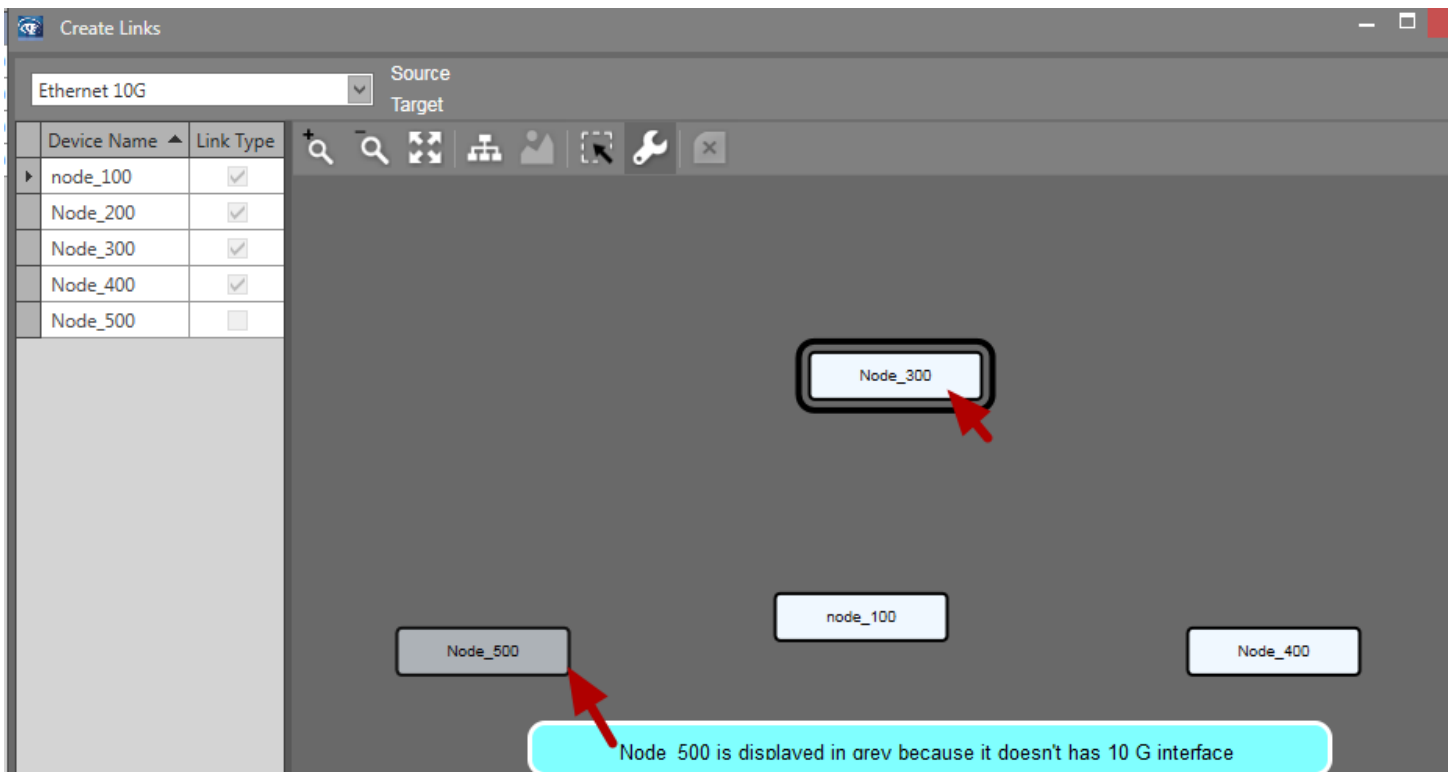
If you aren't satisfied with the layout you can modify it (refer to the lesson how to modify the network layout in HiProvision).

Select the link speed



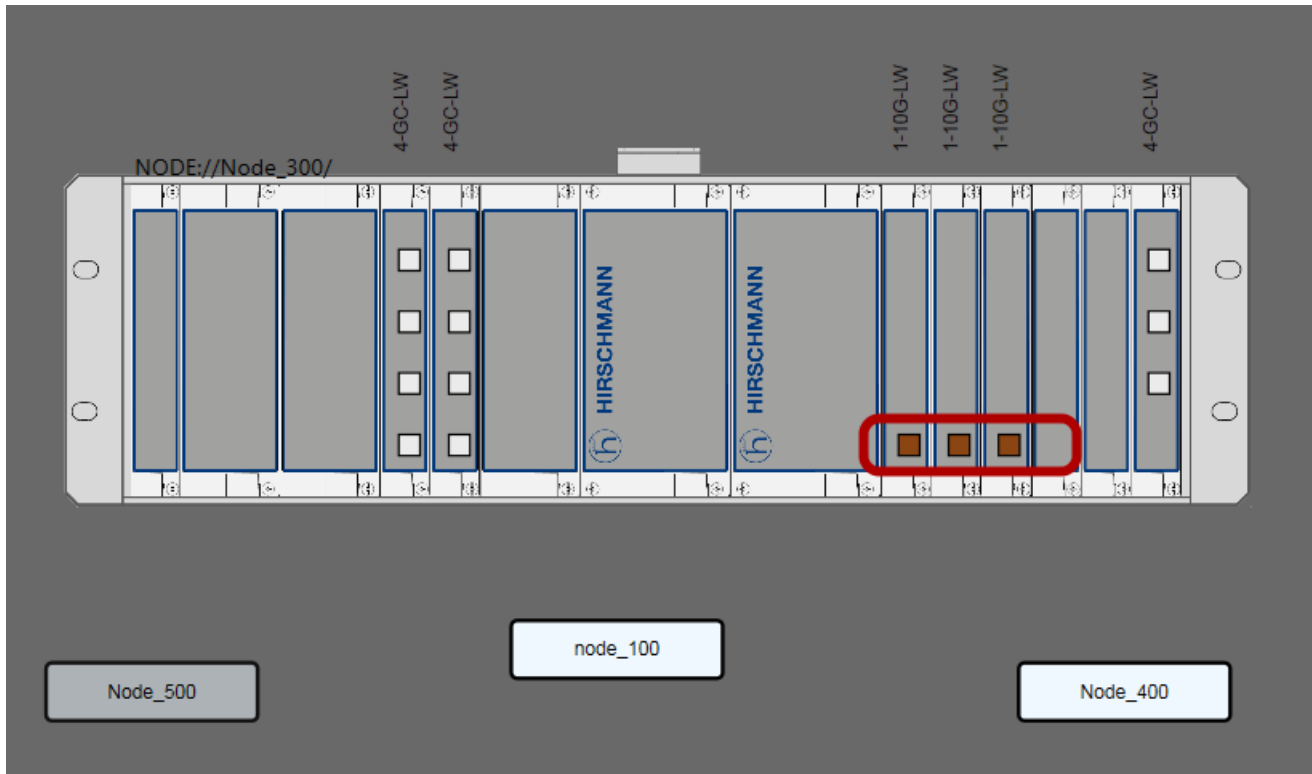
In the device view, the devices having WAN ports at the selected speed are displayed in white. Otherwise they are displayed in grey. In our example we select 10 G.

Select a device clicking on it



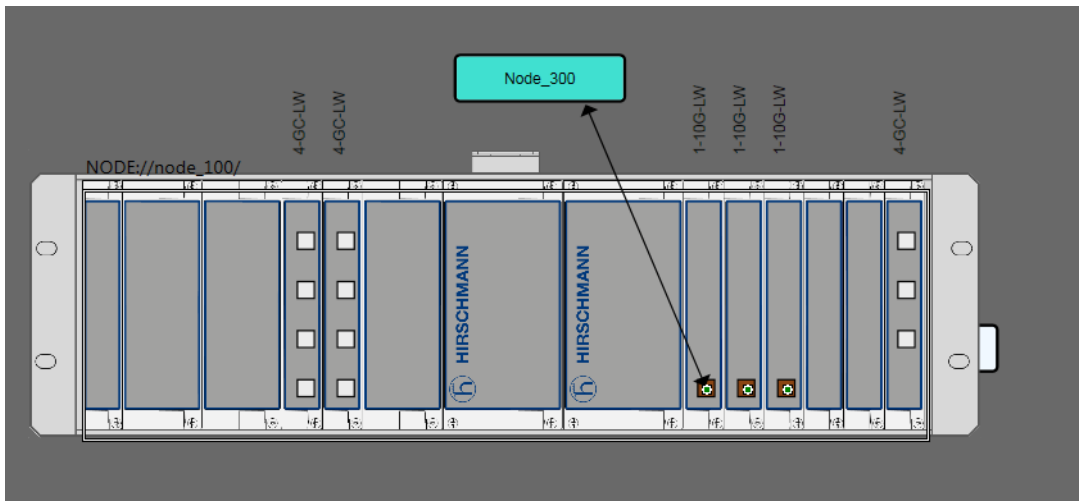
In our example we select Node_300

Select an interface clicking on it



When selecting a device, a detailed view of it is displayed.
Available ports are displayed in brown (WAN ports at the desired speed)
Select the port you want to use for the link.

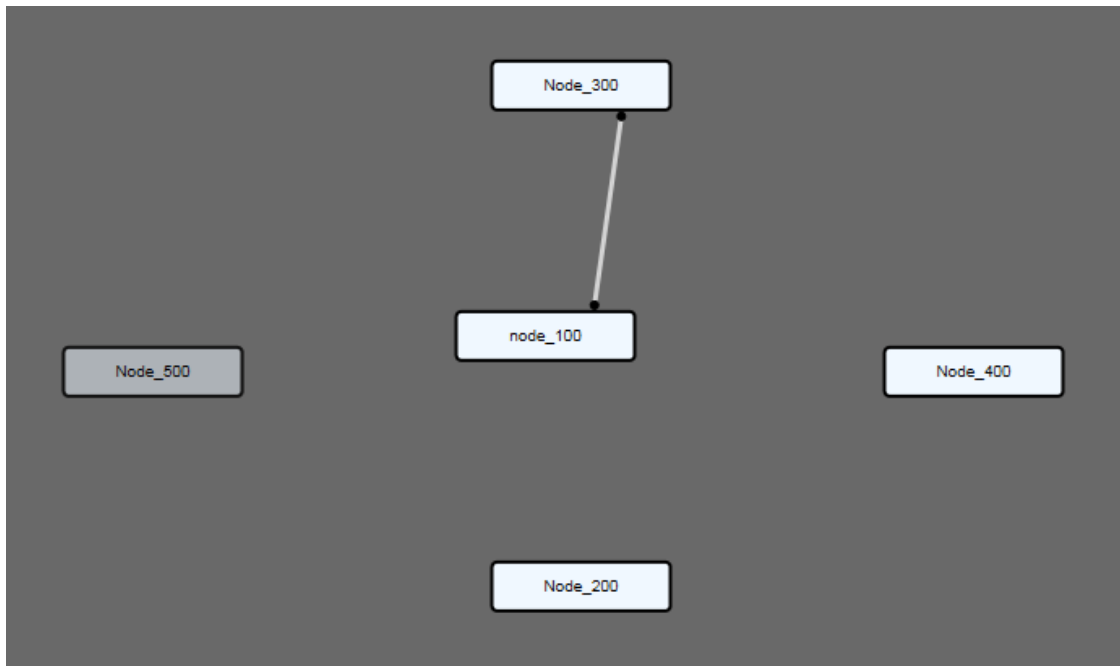
Drag the link to the desired neighbor and clic on it



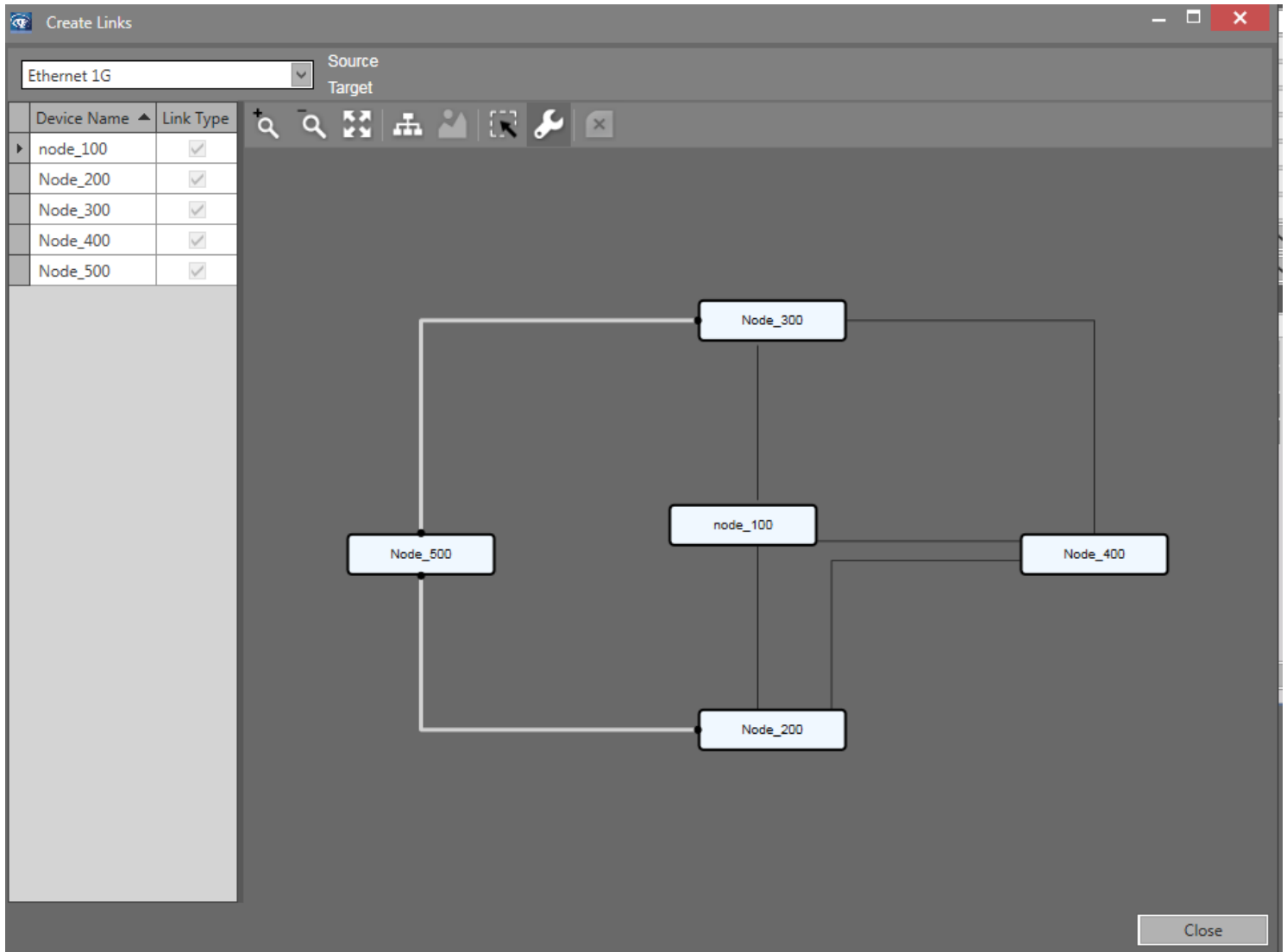
In our example we select the Node_100.
When clicking on the neighbor, it's the same process:
Adetailed view of the device is displayed where available ports are indicated by color.

Select the port you want to use for the link.

The link is created



Repeat these steps until your topology is finished



The links of the selected type are displayed in grey.

The other types of links than the one selected are displayed in black.

(In the screenshot above, 1G type link is selected, only the 1G links are displayed in grey).

If you close and re-open the dialog, the links are re-arranged (in the screenshot above with only vertical or horizontal links).

If you aren't satisfied with the layout or link organization, refer to the lesson "how to modify the network layout in HiProvision"

Links are now created in the database and can be used for the tunnel creation.